

**COLD WATER SUPPLY**

LEGEND AND GENERAL SPECIFICATION  
(UNLESS SPECIFIED OTHERWISE ON DRAWINGS)

- W — CWP COLD WATER SUPPLY PIPE - INSIDE BUILDINGS:- COPPER PIPE TO SANS 460 CLASS 'O' (HARD DRAWN) WITH CAPILLARY FITTINGS TO SANS 1067 PART 2 (1985) WITH 97/3 TIN/COPPER SOLDERING OUTSIDE BUILDINGS:- HIGH IMPACT CLASS 12 PVC PIPES (DURIFLO OR SIMILAR AND APPROVED) TO SANS 966/1976 WITH CAST IRON FITTINGS TO SANS 966. SEE DETAILS. MIN. COVER OVER PIPES - 1000mm.
- ⊗ V BRASS GATE VALVE INTERNAL AND WITH VALVE BOX - EXTERNAL.
- G BRASS GLOBE VALVE.
- IP IRRIGATION POINT.
- ===== SL SLEEVE PIPE UNDER BUILDINGS AND ROADS.

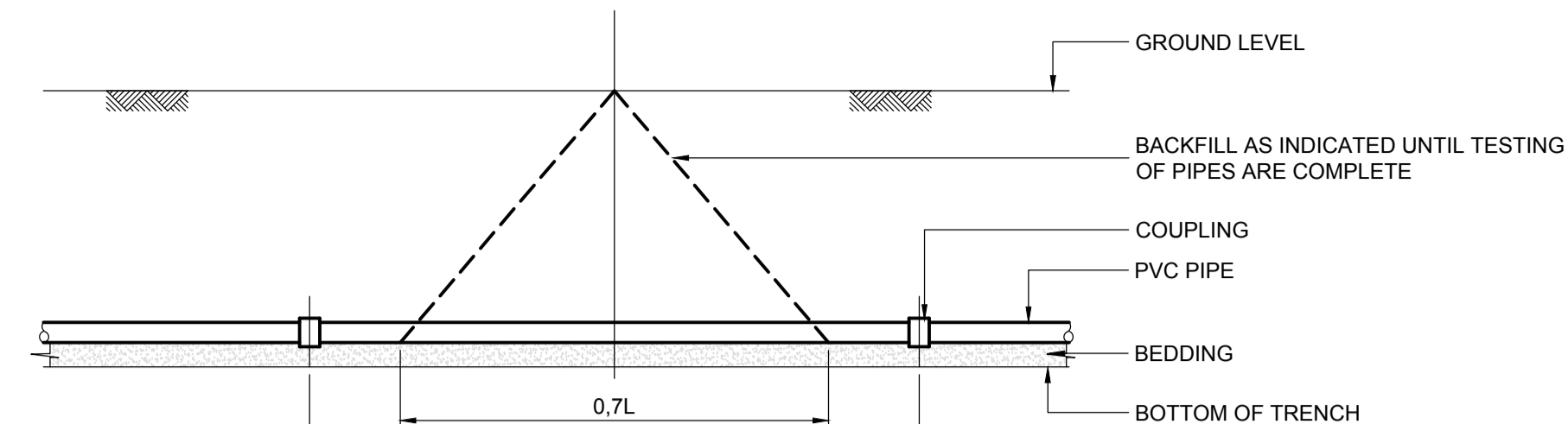
**NOTES:**

1. SEE WATER SUPPLY DETAILS
2. ALL PORTIONS OF PIPES PASSING THROUGH WALLS OR FLOORS TO BE WRAPPED WITH 2 LAYERS BUILDING PAPER.
3. INSTALL BRASS GATE VALVES AT ALL FITTINGS FOR ISOLATING PURPOSES. SEE ELEVATIONS.
4. TESTING OF PIPEWORK TO 1.5 TIMES WORKING PRESSURE
5. PIPES IN GROUND ON BEDDING TO DETAIL
6. ALL FITTINGS AND PIPEWORK TO BE PROPERLY ANCHORED PRIOR TO TESTING. SEE ANCHOR BLOCK DETAILS.
7. GALV. STEEL FITTINGS MUST BE DENSOPOL WRAPPED AFTER INSTALLATION TO PREVENT CORROSION TO DENSOPOL SYSTEM.
8. 150 TO 800 PIPES INSIDE BUILDINGS - COPPER PIPE TO SANS 460 CLASS 'O' (HARD DRAWN) WITH CAPILLARY FITTINGS TO SANS 1067 PART 2 (1985) WITH 97/3 TIN/COPPER SOLDERING TO MANUFACTURERS SPECIFICATIONS.

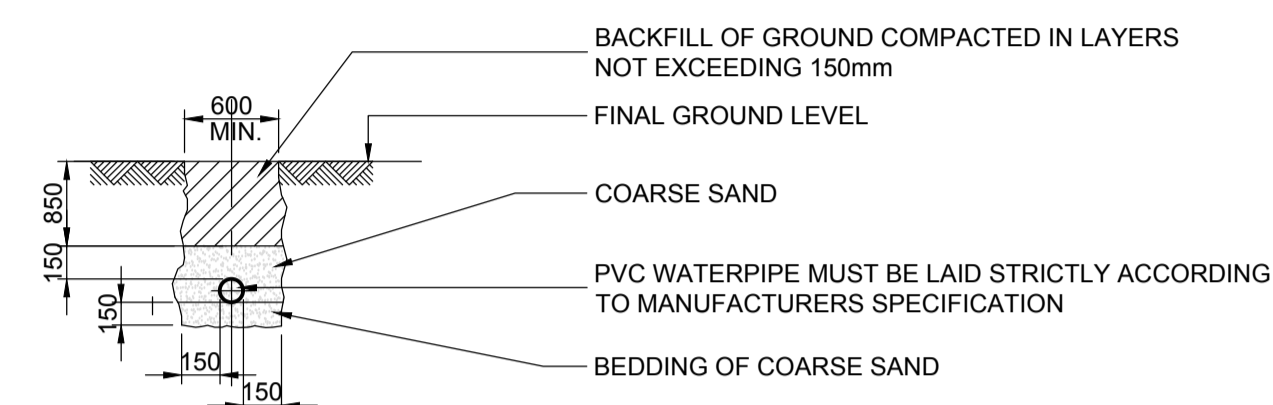
9. ALL PIPEWORK ABOVE 108mm Ø NEEDS TO BE STAINLESS STEEL PIPEWORK WITH FLANGED WITH FLANGED JOINTS PIPEWORK TO ASTM: PIPEWORK TO ASTM A312 / ANSI B36.19 FITTINGS TO ASTM A403 / B16.9 FLANGES TO ASTM A240 TABLE D
10. 1000 PIPES INSIDE BUILDINGS - SCREWED NORMALISED GALV. MILD STEEL PIPE (MED. CLASS) TO BS.1387 AND FITTINGS TO SANS 509 - SEE PLANS
11. 1500 PIPES INSIDE BUILDINGS / FLOOR CHANNELS / SERVICE TUNNELS - FLANGED NORMALISED GALVANISED MILD STEEL PIPES (MED. CLASS) TO BS.1387 & 1740. FLANGES TABLE 'O' (1600 KPa WORKING PRESSURE) AND FITTINGS TO SANS 509.
12. PIPEWORK IN TUNNELS / FLOOR CHANNELS MUST BE PROTECTED AGAINST CORROSION - SEE NOTE 14.
13. 500, 1000 & 1500 PIPEWORK IN GROUND - HIGH IMPACT CLASS 16 PVC PIPES - MINEFLO OR SIMILAR AND APPROVED TO SANS 1283/1982 WITH GALV. STEEL FITTINGS TO SANS 815/1979. (IF SPECIFIED)
14. PIPE DIAMETERS SHOWN ON PLANS IS NOMINAL DIAMETERS EQUIVALENT PIPE SIZES FOR DIFFERENT PIPE MATERIALS MUST BE INSTALLED. SEE TABLE OF PIPE SIZES.
15. PIPEWORK MUST BE CLEANED WITH GALV. STEEL CLEANER FOLLOWED BY ONE LAYER PLASCON UNDERCOAT CHC 1 CHEMCOTE, FOLLOWED BY ONE LAYER PLASCON CHC 101 CHEMCOTE, FOLLOWED BY ONE LAYER PLASCON CHC 3810 BRILLIANT GREEN - SANS 1091 COLOUR NO H10.
16. ALL PIPEWORK INSTALLATIONS TO SANS 1200 L - 1983 & LB 1983 DISINFECTION OF PIPEWORK TO SANS 1200 L - 1083.5.10
17. PIPEWORK EXPOSED TO OUTSIDE ON ROOFS ETC., TO BE INSULATED AGAINST FREEZING WITH 15mm THICK PRE-FORMED MINERAL WOOL INSULATION MATERIAL WITH GALV. METAL CLADDING.
18. FITTINGS HAVE TO COMPLY WITH SPECIFIC REDERANCE TO POINT 3.3.3. TABLE 2 OF SANS 1067 PART 2 (1985)
19. CONTRACTOR TO PROVIDE INDEPENDANT CONTROL SURVEY OF AS-BUILD UNDERGROUND SERVICES.

**COLD WATER SUPPLY LEGEND**

WATER SUPPLY W1

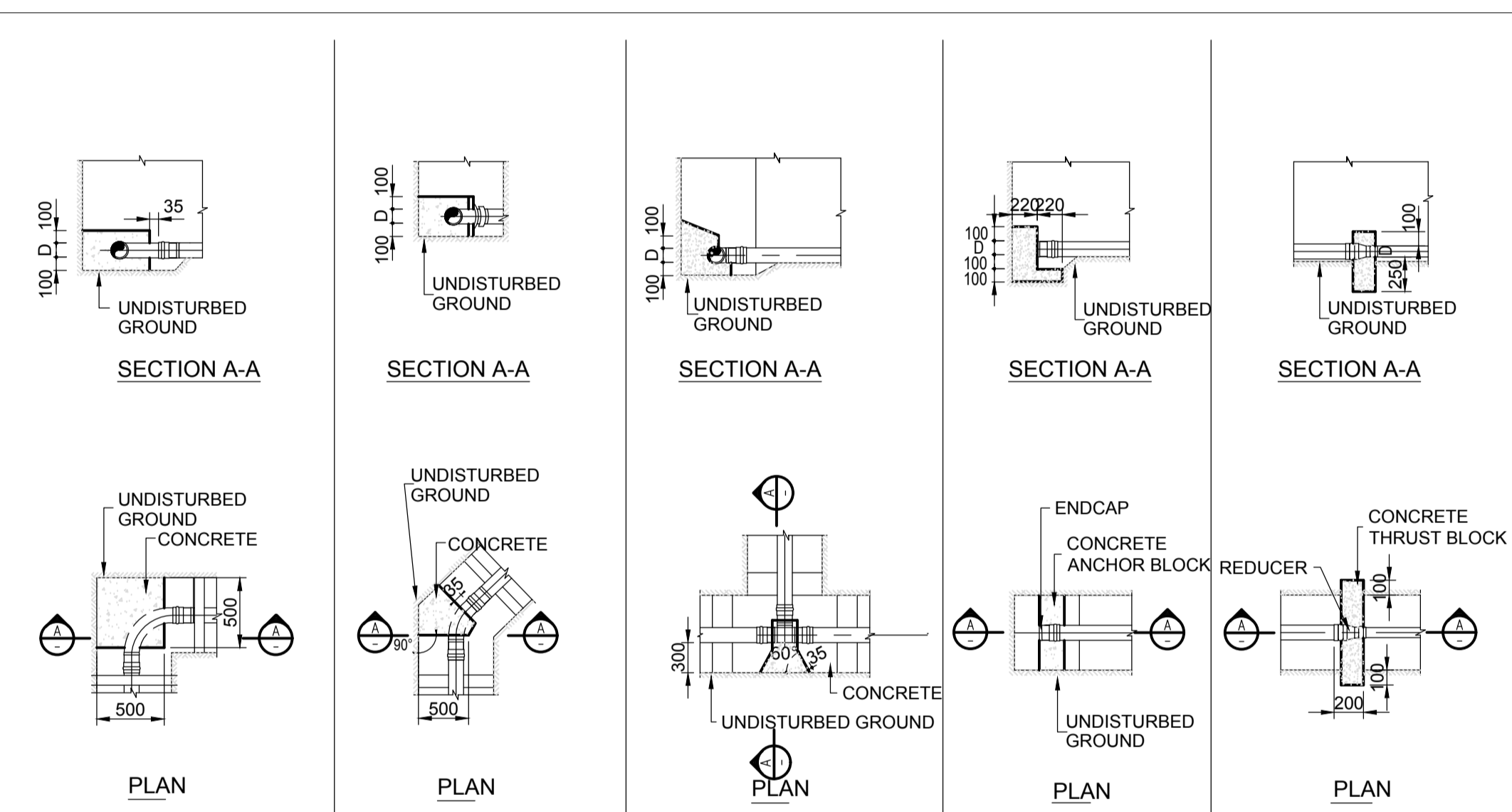


**DETAIL OF BACKFILL FOR TESTING OF PIPES**



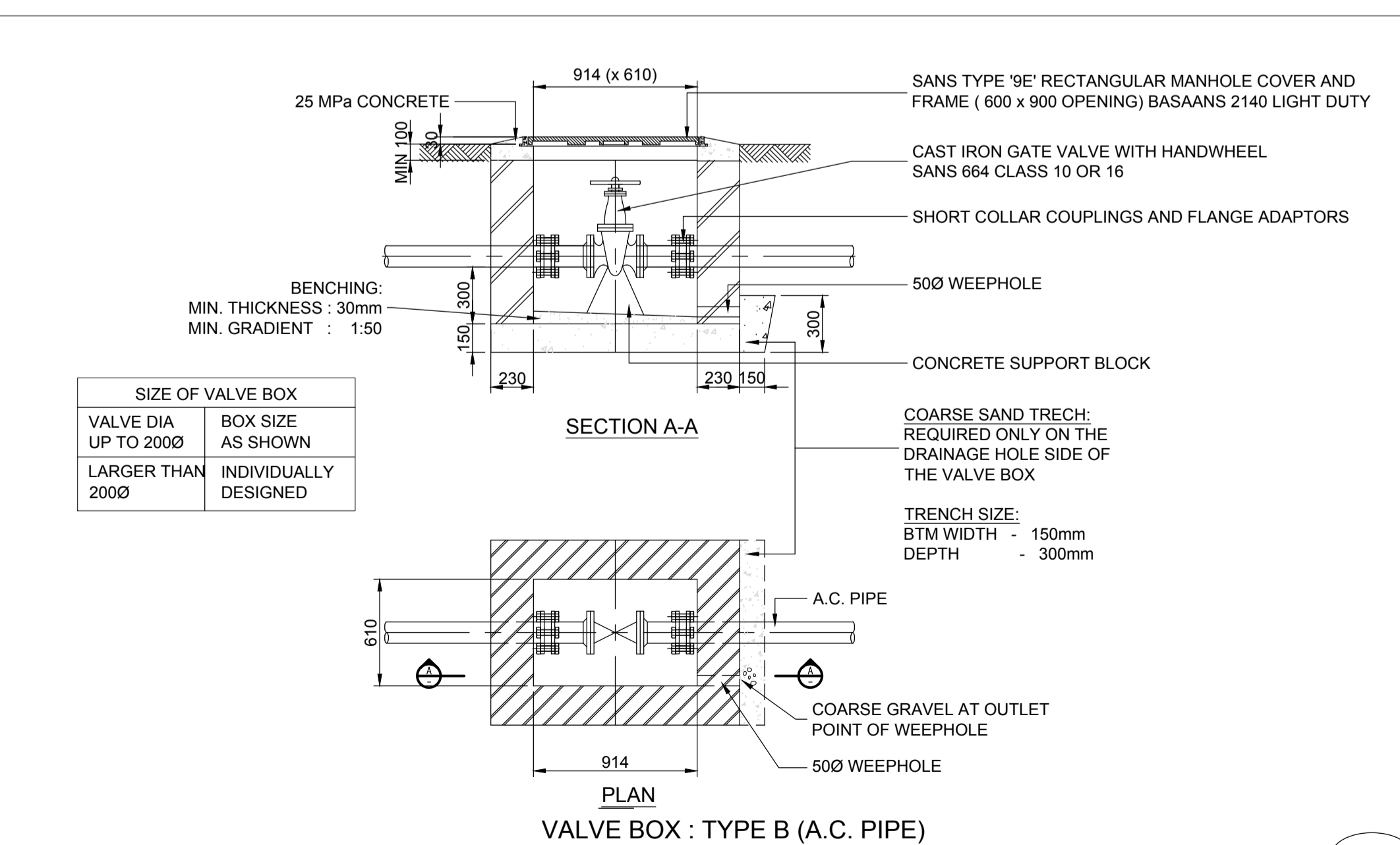
**BEDDING AND EXCAVATION DETAILS FOR PVC PIPES**

WATER SUPPLY W2



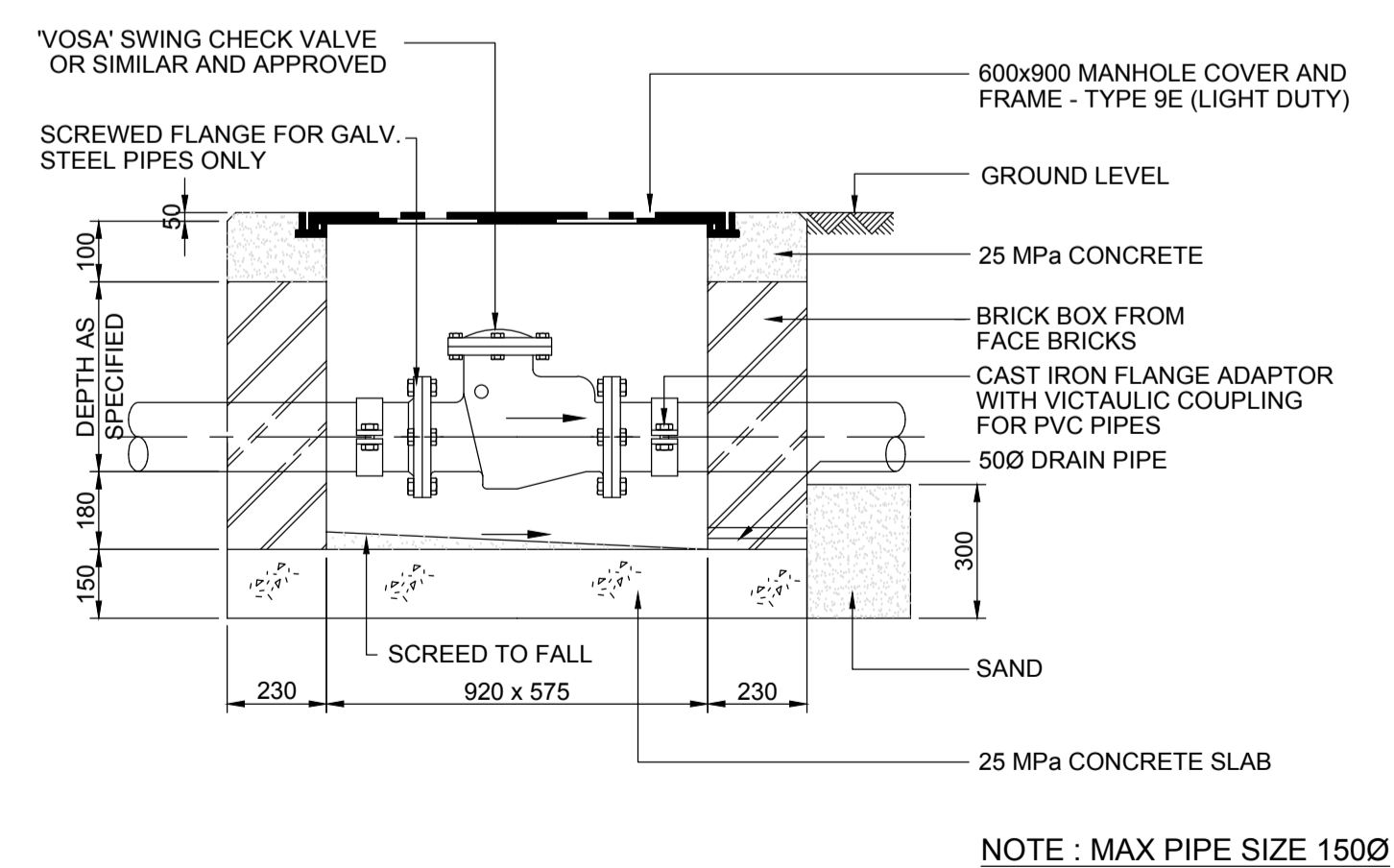
**ANCHOR BLOCK FOR P.V.C. PIPES (p.v.c. and c.i. fittings)**

WATER SUPPLY W6



**VALVE BOX : TYPE B (A.C. PIPE)**

WATER SUPPLY W10



**DETAIL OF NON-RETURN VALVE BOX**

WATER SUPPLY W23



**CONSULTANT**

**CENTURION**

263A West Avenue  
PO BOX 3173, Pretoria, 0001  
Gauteng, South Africa  
+27 (0) 12 421 3500 tel  
www.aecom.com

+27 (0) 12 421 3501 fax  
Reg No. 1968/006628/07

**PROJECT**

**IDC BULK WATER**

BUILDING & MAINTENANCE FACILITIES MANAGEMENT  
19 FREDMAN DRIVE, SANDTON, 2196

**CLIENT**

IDC



Industrial Development Corporation

**NOTES**

1. FOR GENERAL NOTES, REFER TO DRAWING: N/A
2. DRAWINGS ARE NOT TO BE SCALED. ALL LEVELS AND DIMENSIONS TO BE VERIFIED ON SITE PRIOR TO COMMENCEMENT OF WORKS. ANY DISCREPANCIES TO BE BROUGHT TO THE ENGINEER / ARCHITECTS ATTENTION IMMEDIATELY
3. THIS DRAWING IS TO BE READ IN CONJUNCTION WITH ALL OTHER DRAWINGS, SCHEDULES AND SPECIFICATIONS RELATED TO THIS PROJECT.
4. ALL BUILDING WORK AND MATERIALS ARE TO COMPLY WITH LOCAL AUTHORITY'S REQUIREMENTS AND ARE TO BE IN ACCORDANCE WITH SANS 10400 NATIONAL BUILDING REGULATIONS
5. ALL OPENINGS TO BE MEASURED ON SITE BEFORE MANUFACTURING OF DOORS, WINDOWS, GATES, LOUVRES, ROLLERSHUTTER DOORS, SHOPFRONTS ETC.
6. SPECIALIST TO CHECK & CONFIRM ALL WINDOWS & SHOPFRONT BEFORE MANUFACTURER
7. ALL FINISHES AS PER SPECIFICATION DOCUMENT

**ISSUE / REVISION**

IR	DATE	DESCRIPTION	ISS BY

**DRAWING CHECKS**

DESIGNED BY	W. J. OBERHOLZER	N/A
DRAWN BY	E. HUYSAMEN	N/A
DESIGNED CHECKED BY	S. ALLY	N/A
DRAWING CHECKED BY	W. J. OBERHOLZER	N/A

**APPROVAL CONSULTANT**

NAME	W. J. OBERHOLZER	DATE	2019-01-28
PROF REG. NO.	201270058	SIGNATURE	

THE MASTER HELD AT THE AECOM CENTURION OFFICE BEARS THE ORIGINAL SIGNATURE OF APPROVAL

**BUILDING/FACILITY/ZONE**

OVERALL BUILDING SITE

**PROJECT NUMBER**

60586065

**SHEET TITLE**

WATER DETAILS  
SHEET 1 OF 2

**DISCIPLINE**

WET SERVICES

**DRAWING NUMBER**

PROJECT	ORIG.	BS CODE	LEVEL	TYPE	ROLE	SERIAL NO.	STAT.	REV
60586065-ACM-00	-00-	DR-PH	-080002-	T	-0			

DRAFT #PRELIMINARY / TENDER / FINAL / C.CONSTRUCTION / AS-BUILT, RECORD / REPORT  
SCALE 1:100

FOR TENDER ONLY

COPYRIGHT RESERVED