



Clothing & Textiles

Strategic Business Unit

Our Approach

Through our Clothing and Textiles strategic business unit (SBU), we offer support to a variety of enterprises across the clothing and textiles sector. The aim is to build a locally and regionally competitive clothing and textiles industry through strategic partnerships that promote entrepreneurship and social and industrial development. The unit works closely with the Clothing Textiles Competitiveness Program which is a grant scheme managed on behalf of the Department of Trade and Industry.

Objectives

- To support the development of a viable model for a competitive and sustainable local clothing and textiles industry; and
- To assist new enterprises to start and existing enterprises to expand, by providing funding in order to create and preserve jobs and drive social and economic growth.

Doing Business With Us

We identify and develop strategic projects involved in the following areas:

- Clothing manufacturing;
- Dyeing, printing and finishing of fabrics;
- Footwear manufacturing;
- Household textile production;
- Leather tanning; and leather product manufacturing;
- Natural fibre processing, including wool and mohair beneficiation;
- Non-woven textile production;
- Synthetic fibre production; and
- Spinning of yarns, knitting and weaving of fabrics.

Who Should Apply For Funding?

Existing manufacturers who wish to expand or modernise their production capacity; manufacturers in distress due to global economic trading conditions; and entrepreneurs looking to start up small to medium manufacturing facilities. We do not refinance assets. Every business proposal is considered on its own merits, but preference is given to:

- Financing fixed assets and the fixed portion of growth in working capital requirements;
- Supporting ventures/projects that have a significant socio-economic impact in terms of job creation, value addition, empowerment, rural development, and/or township development; and
- Supplying distress funding for troubled companies that have a clear turnaround plan.

Funding Criteria

Our minimum investment requirements are:

- Security, of a type related to your business's specific circumstances;
- Compliance with international environmental standards; and
- Relevant bargaining council compliance.

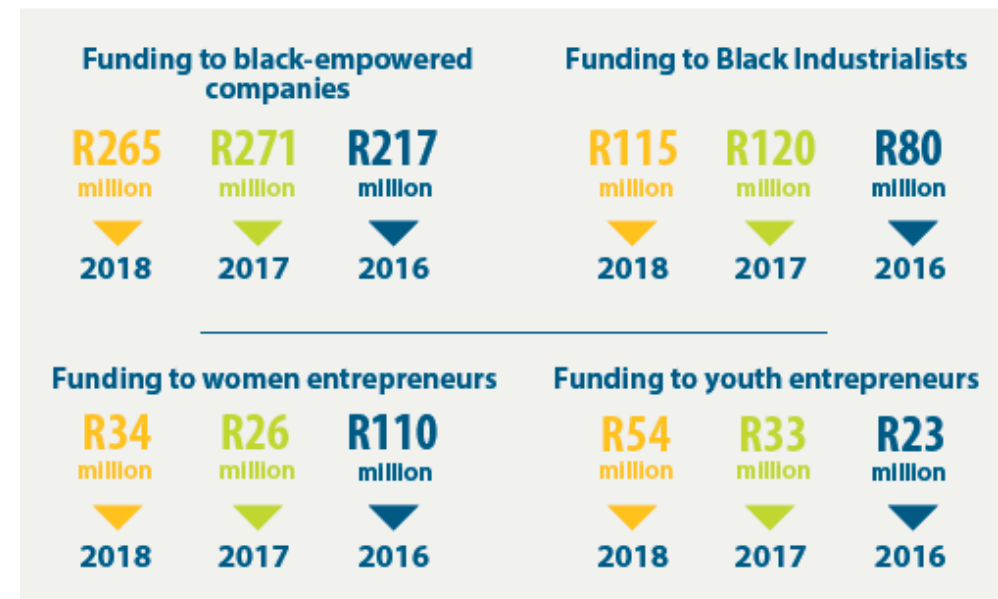
In addition, shareholders/owners are expected to make a material contribution to the project — generally 35% of total assets for going concerns and 45% – 50% for start-ups, depending on the industry norms and risks involved. We prefer our exposure not to exceed that of the owners of the business.

However, the contribution for start-ups with a material developmental and job creation impact may be lowered, in which case the IDC may be prepared to extend finance greater than the owners' contribution.

How To Apply

- Draw up a well-researched business plan, stating a compelling case for funding;
- Register on www.idc.co.za to apply online. The online application portal will guide you on all the required documents. Alternatively, you can submit a manual application at any of IDC offices across the country (See backside for regional offices);
- Upload/Submit your application form together with relevant documents, certificates and business plan; and
- You will receive a confirmation from IDC once your application has been received. Note that while processing your application, we may ask you to supply extra information or documentation.

Our Investment



HEAD OFFICE

19 Fredman Drive, Sandown
PO Box 784055, Sandton, 2146
Tel: 011 269 3000 Fax: 011 269 3116
Website: www.idc.co.za
Twitter: @IDCSouthAfrica
Facebook: Industrial Development Corporation

REGIONAL OFFICES

Free State: Bloemfontein

Mazars Building, 46, 1st Avenue, Westdene, Bloemfontein
Private Bag X 11, Suite 25, Brandhof, 9324
Tel: 051 411 1450 | Fax: 051 447 4895

Limpopo: Polokwane

Maneo Building, Ground Floor, 73 Biccard Street,
Postnet Suite 422, Private Bag X9307, Polokwane, 0699
Tel: 015 299 4080 | Fax: 015 295 4521

North West: Rustenburg

1st Floor, Sunetco Building, 32B Heystek Street, Rustenburg
Postnet Suite 290, Private Bag X 82245, Rustenburg, 0300
Tel: 014 591 9660/1 | Fax: 014 592 448

North West: Brits

Suite 108, Safari Centre, 28 Van Velden Street, Brits, 0250
Tel: 012 252 0008 | Fax: 012 252 4657

North West: Mahikeng

1B Mikro Plaza, cnr First Street/Bessemer Street,
Industrial Sites Mahikeng
Postnet Suite 89, Private Bag X 2230, Mahikeng South, 2791
Tel: 018 397 9942 | Fax: 018 381 0544

Northern Cape: Kimberley

Sanlam Business Complex, 13 Bishops Avenue, Kimberley
8301. P O Box 808, Kimberley, 8300
Tel: 053 807 1050 | Fax: 053 832 7395

Northern Cape: Upington

De Drift Plaza, Block 6, Louisvale Avenue/Road
Upington, 8800
Tel: 054 337 8600 | Fax: 054 334 0835

Western Cape: Cape Town

2817, 28th Floor ABSA Centre, 2 Riebeeck Street,
Cape Town
P O Box 6905, Roggebaai, 8012
Tel: 021 421 4794 | Fax: 021 419 3570

KwaZulu-Natal: Durban

Suite 2101, 21st Floor, The Embassy Building,
199 Anton Lembede Street, Durban
P O Box 2411, Durban, 4000
Tel: 031 337 4455 | Fax: 031 337 4790

KwaZulu-Natal: Pietermaritzburg

1st Floor, ABSA Building, 15 Chatterton Road,
Pietermaritzburg
P O Box 2411, Durban, 4000
Tel: 033 328 2560 | Fax: 033 342 5341

Eastern Cape: East London

2nd Floor Block B, Chesswood Office Park, Winkley
Street, Berea, East London
P O Box 19048, Tecoma, 5214
Tel: 043 721 0733/4 | Fax: 043 721 0735

Eastern Cape: Port Elizabeth

Southern Life Gardens, Block A (Ground) 70 2nd
Avenue, Newton Park, Port Elizabeth
P O Box 27848, Greenacres, Port Elizabeth, 6057
Tel: 041 363 1640 | Fax: 041 363 2349

Eastern Cape: Mthatha

Ground Floor, ECDC House, 7 Sisson Street, Fort
Gale, Mthatha, 5100
Tel: 047 504 2200 | Fax: 047 531 1587

Mpumalanga: Nelspruit

Suite 702, Maxsa Building, corner Ferreira and Streak
Streets, Nelspruit
P O Box 3740, Nelspruit, 1200
Tel: 013 752 7724 | Fax: 013 752 8139

Mpumalanga: Emalahleni

Smokey Mountain Office Park, 22 Corridor Crescent,
Route N4 Business Park, Third Floor, Room 304, Ben
Fleur X11,E malahleni, 1035
Tel: 013 658 2960 | Fax: 013 656 1043

SATELLITE OFFICES

By appointment with main regional office only

Free State: Phuthaditjhaba

Seda Office, Mampoi Road, Phuthaditjhaba, Qwa Qwa
Contact Bloemfontein Regional Office

Free State: Welkom

Seda Office, 1 Reinet Street, Welkom, 9460
Contact Bloemfontein Regional Office

KwaZulu-Natal: Richards Bay

Suite 17, Partridge Place, corner Lira Link &
Tasselberry Road, Richards Bay.
P O Box 2411, Durban, 4000
Contact Durban Regional Office

North West: Klerksdorp

Seda Office, West End Building, 2nd Floor, 51 Leask
Street, Klerksdorp
Contact Rustenburg Regional Office

North West: Vryburg

83 Vry Street, Vryburg
(Seda – Dr Ruth S Mompoti Branch)
Contact Brits Regional Office

Mpumalanga: Secunda

South Wing, Municipal Building Lurgi Square,
Secunda, 2302
Contact Nelspruit Regional Office

Limpopo: Tzaneen

23 Danie Joubert Street, 2nd floor,
ABSA Building, Tzaneen, 0850
Contact Polokwane Regional Office

Limpopo: Thohoyandou

Bindulavhathu Office Building,
3rd floor, Thohoyandou, 0950
Contact Polokwane Regional Office

Western Cape: George

Beacon Place, 125 Meade Street, George, 6529
Contact Cape Town Regional Office